



SH16, Tahekeroa Road, Makarau, 0873

**Telco Report to Council for Infill Subdivision via
Wireless Telecommunications**

Compass Communications Ltd

0800 969 869

www.compass.net.nz

Compass Communications Ltd
PO Box 2533
Shortland Street
Auckland 1140

Compass Communications LTD
7/12/2016

Contents

Surveyed/tested lots – Lot 1	3
Surveyed/tested lots – Lot 2	5
Surveyed/tested lots – Lot 3	7
Surveyed/tested lots – Lot 4	9
Surveyed/tested lots – Lot 5	11
Surveyed/tested lots – Lot 6	13

Appendix

Site Plan.....	15
Installer.....	16

Telco Report to Council for Infill Subdivision via Wireless Telecommunications

Subdivision address(s): SH16, Tahekeroa Road, Makarau, 0873

Surveyed/tested lots – Lot 1 (7.1ha)

Telco Reference: Jeremy Dillon (590908) Council Reference:

Line of Sight Test Date: 08/07/2016

Services Expected to be Supplied

Item	Service Detail	Telco to Certify if can supply (Yes/No)
Phone line	Standard exchange based phone services	Yes
	Option for second phone line	Yes
	Supports fax service	Subject to the fax machine
	Supports a monitored security alarm line	Yes for IP Alarms / No for Analogue monitoring
	Supports a medical alarm (such as St John's "Lifelink" service)	Yes for IP alarms / No for Analogue
Internet	Internet access for browsing and email	Yes

Service Parameters

Parameter	Telco to Certify and/or Comment
Confirm good line of sight coverage from the telco radio node/base station to the individual homes in the subdivision *	Due to the natural elevation, size and close proximity to the Tahekeroa Base Station, this lot has passed a line of sight test for a data and VoIP communications service.
Schedule results of any signal strength or file transfer tests carried out	Refer notes below
Are any easements required to protect line of sight transmission? *	No* as below
Confirm satisfactory site tests have been performed to each property/home*	Yes*
State Internet speed achieved at the site test	Up to 10Mbps downlink / 3Mbps uplink
Confirm a design reliability of at least 99.9% (approx 8 hrs outage per year) averaged over a year from their network core to the home demarcation point	Yes
Confirm the <u>option</u> to remain working during a power outage (eg those with a medical condition or security alarm who may require it) by the addition of a back-up battery source of power with a capacity of 4-8 hours	Yes. Battery back up to be funded and maintained by customer
Confirm appropriate network capacity is available or planned to be available within an acceptable time to service the subdivision	Yes – We have over 30 spaces currently available on the Tahekeroa Base Station site. We will also expand the capacity of the site once the remaining

	spaces are filled.
--	--------------------

Pricing

Service		Pricing (\$, incl GST)
Compass Wireless	Installation	\$249 for standard install
Homephone + Internet	Monthly Rental (Up to 5/1Mbps Broadband Access+ 25GB + Home phone)	From \$88
Compass Wireless	Installation	\$249 for standard install
Internet	Monthly Rental (Up to 5/1Mbps Broadband Access + 25GB)	From \$78

NOTES:

- *Tests performed on bare subdivision with no existing buildings.
- *Line of sight and throughput is acceptable from ground level within the tested lot
- *Compass Communications has no control over future man-made or natural structures that may inhibit the delivery of service to the tested lot.

This report and certification is provided as evidence that the telecommunication requirements set by condition of subdivision have been complied with.

Signed



Print:

Abilash Thangavel

Position

Wireless Sales Representative

Telco

Compass Communications LTD

Date

12/07/2016

Telco Report to Council for Infill Subdivision via Wireless Telecommunications

Subdivision address(s): SH16, Tahekeroa Road, Makarau, 0873

Surveyed/tested lots – Lot 2 (1.9ha)

Telco Reference: Jeremy Dillon (590908) Council Reference:

Line of Sight Test Date: 08/07/2016

Services Expected to be Supplied

Item	Service Detail	Telco to Certify if can supply (Yes/No)
Phone line	Standard exchange based phone services	Yes
	Option for second phone line	Yes
	Supports fax service	Subject to the fax machine
	Supports a monitored security alarm line	Yes for IP Alarms / No for Analogue monitoring
	Supports a medical alarm (such as St John's "Lifelink" service)	Yes for IP alarms / No for Analogue
Internet	Internet access for browsing and email	Yes

Service Parameters

Parameter	Telco to Certify and/or Comment
Confirm good line of sight coverage from the telco radio node/base station to the individual homes in the subdivision *	Due to the natural elevation, size and close proximity to the Tahekeroa Base Station, this lot has passed a line of sight test for a data and VoIP communications service.
Schedule results of any signal strength or file transfer tests carried out	Refer notes below
Are any easements required to protect line of sight transmission? *	No* as below
Confirm satisfactory site tests have been performed to each property/home*	Yes*
State Internet speed achieved at the site test	Up to 10Mbps downlink / 3Mbps uplink
Confirm a design reliability of at least 99.9% (approx 8 hrs outage per year) averaged over a year from their network core to the home demarcation point	Yes
Confirm the <u>option</u> to remain working during a power outage (eg those with a medical condition or security alarm who may require it) by the addition of a back-up battery source of power with a capacity of 4-8 hours	Yes. Battery back up to be funded and maintained by customer
Confirm appropriate network capacity is available or planned to be available within an acceptable time to service the subdivision	Yes – We have over 30 spaces currently available on the Tahekeroa Base Station site. We will also expand the capacity of the site once the remaining spaces are filled.

Compass Communications LTD – SH16, Tahekeroa Road, Makarau, 0873

Pricing

Service		Pricing (\$, incl GST)
Compass Wireless	Installation	\$249 for standard install
Homephone + Internet	Monthly Rental (Up to 5/1Mbps Broadband Access+ 25GB + Home phone)	From \$88
Compass Wireless	Installation	\$249 for standard install
Internet	Monthly Rental (Up to 5/1Mbps Broadband Access + 25GB)	From \$78

NOTES:

- *Tests performed on bare subdivision with no existing buildings.
- *Line of sight and throughput is acceptable from ground level within the tested lot
- *Compass Communications has no control over future man-made or natural structures that may inhibit the delivery of service to the tested lot.

This report and certification is provided as evidence that the telecommunication requirements set by condition of subdivision have been complied with.

Signed



Print:

Abilash Thangavel

Position

Wireless Sales Representative

Telco

Compass Communications LTD

Date

12/07/2016

Telco Report to Council for Infill Subdivision via Wireless Telecommunications

Subdivision address(s): SH16, Tahekeroa Road, Makarau, 0873

Surveyed/tested lots – Lot 3 (10.0ha)

Telco Reference: Jeremy Dillon (590908) Council Reference:

Line of Sight Test Date: 08/07/2016

Services Expected to be Supplied

Item	Service Detail	Telco to Certify if can supply (Yes/No)
Phone line	Standard exchange based phone services	Yes
	Option for second phone line	Yes
	Supports fax service	Subject to the fax machine
	Supports a monitored security alarm line	Yes for IP Alarms / No for Analogue monitoring
	Supports a medical alarm (such as St John's "Lifelink" service)	Yes for IP alarms / No for Analogue
Internet	Internet access for browsing and email	Yes

Service Parameters

Parameter	Telco to Certify and/or Comment
Confirm good line of sight coverage from the telco radio node/base station to the individual homes in the subdivision *	Due to the natural elevation, size and close proximity to the Tahekeroa Base Station, this lot has passed a line of sight test for a data and VoIP communications service.
Schedule results of any signal strength or file transfer tests carried out	Refer notes below
Are any easements required to protect line of sight transmission? *	No* as below
Confirm satisfactory site tests have been performed to each property/home*	Yes*
State Internet speed achieved at the site test	Up to 10Mbps downlink / 3Mbps uplink
Confirm a design reliability of at least 99.9% (approx 8 hrs outage per year) averaged over a year from their network core to the home demarcation point	Yes
Confirm the <u>option</u> to remain working during a power outage (eg those with a medical condition or security alarm who may require it) by the addition of a back-up battery source of power with a capacity of 4-8 hours	Yes. Battery back up to be funded and maintained by customer
Confirm appropriate network capacity is available or planned to be available within an acceptable time to service the subdivision	Yes – We have over 30 spaces currently available on the Tahekeroa Base Station site. We will also expand the capacity of the site once the remaining spaces are filled.

Compass Communications LTD – SH16, Tahekeroa Road, Makarau, 0873

Pricing

Service		Pricing (\$, incl GST)
Compass Wireless	Installation	\$249 for standard install
Homephone + Internet	Monthly Rental (Up to 5/1Mbps Broadband Access+ 25GB + Home phone)	From \$88
Compass Wireless	Installation	\$249 for standard install
Internet	Monthly Rental (Up to 5/1Mbps Broadband Access + 25GB)	From \$78

NOTES:

- *Tests performed on bare subdivision with no existing buildings.
- *Line of sight and throughput is acceptable from ground level within the tested lot
- *Compass Communications has no control over future man-made or natural structures that may inhibit the delivery of service to the tested lot.

This report and certification is provided as evidence that the telecommunication requirements set by condition of subdivision have been complied with.

Signed



Print:

Abilash Thangavel

Position

Wireless Sales Representative

Telco

Compass Communications LTD

Date

12/07/2016

Telco Report to Council for Infill Subdivision via Wireless Telecommunications

Subdivision address(s): SH16, Tahekeroa Road, Makarau, 0873

Surveyed/tested lots – Lot 4 (9.5ha)

Telco Reference: Jeremy Dillon (590908) Council Reference:

Line of Sight Test Date: 08/07/2016

Services Expected to be Supplied

Item	Service Detail	Telco to Certify if can supply (Yes/No)
Phone line	Standard exchange based phone services	Yes
	Option for second phone line	Yes
	Supports fax service	Subject to the fax machine
	Supports a monitored security alarm line	Yes for IP Alarms / No for Analogue monitoring
	Supports a medical alarm (such as St John's "Lifelink" service)	Yes for IP alarms / No for Analogue
Internet	Internet access for browsing and email	Yes

Service Parameters

Parameter	Telco to Certify and/or Comment
Confirm good line of sight coverage from the telco radio node/base station to the individual homes in the subdivision *	Due to the natural elevation, size and close proximity to the Tahekeroa Base Station, this lot has passed a line of sight test for a data and VoIP communications service.
Schedule results of any signal strength or file transfer tests carried out	Refer notes below
Are any easements required to protect line of sight transmission? *	No* as below
Confirm satisfactory site tests have been performed to each property/home*	Yes*
State Internet speed achieved at the site test	Up to 10Mbps downlink / 3Mbps uplink
Confirm a design reliability of at least 99.9% (approx 8 hrs outage per year) averaged over a year from their network core to the home demarcation point	Yes
Confirm the <u>option</u> to remain working during a power outage (eg those with a medical condition or security alarm who may require it) by the addition of a back-up battery source of power with a capacity of 4-8 hours	Yes. Battery back up to be funded and maintained by customer
Confirm appropriate network capacity is available or planned to be available within an acceptable time to service the subdivision	Yes – We have over 30 spaces currently available on the Tahekeroa Base Station site. We will also expand the capacity of the site once the remaining spaces are filled.

Compass Communications LTD – SH16, Tahekeroa Road, Makarau, 0873

Pricing

Service		Pricing (\$, incl GST)
Compass Wireless	Installation	\$249 for standard install
Homephone + Internet	Monthly Rental (Up to 5/1Mbps Broadband Access+ 25GB + Home phone)	From \$88
Compass Wireless	Installation	\$249 for standard install
Internet	Monthly Rental (Up to 5/1Mbps Broadband Access + 25GB)	From \$78

NOTES:

- *Tests performed on bare subdivision with no existing buildings.
- *Line of sight and throughput is acceptable from ground level within the tested lot
- *Compass Communications has no control over future man-made or natural structures that may inhibit the delivery of service to the tested lot.

This report and certification is provided as evidence that the telecommunication requirements set by condition of subdivision have been complied with.

Signed



Print:

Abilash Thangavel

Position

Wireless Sales Representative

Telco

Compass Communications LTD

Date

12/07/2016

Telco Report to Council for Infill Subdivision via Wireless Telecommunications

Subdivision address(s): SH16, Tahekeroa Road, Makarau, 0873

Surveyed/tested lots – Lot 5 (1.5ha)

Telco Reference: Jeremy Dillon (590908) Council Reference:

Line of Sight Test Date: 08/07/2016

Services Expected to be Supplied

Item	Service Detail	Telco to Certify if can supply (Yes/No)
Phone line	Standard exchange based phone services	Yes
	Option for second phone line	Yes
	Supports fax service	Subject to the fax machine
	Supports a monitored security alarm line	Yes for IP Alarms / No for Analogue monitoring
	Supports a medical alarm (such as St John's "Lifelink" service)	Yes for IP alarms / No for Analogue
Internet	Internet access for browsing and email	Yes

Service Parameters

Parameter	Telco to Certify and/or Comment
Confirm good line of sight coverage from the telco radio node/base station to the individual homes in the subdivision *	Due to the natural elevation, size and close proximity to the Tahekeroa Base Station, this lot has passed a line of sight test for a data and VoIP communications service.
Schedule results of any signal strength or file transfer tests carried out	Refer notes below
Are any easements required to protect line of sight transmission? *	No* as below
Confirm satisfactory site tests have been performed to each property/home*	Yes*
State Internet speed achieved at the site test	Up to 10Mbps downlink / 3Mbps uplink
Confirm a design reliability of at least 99.9% (approx 8 hrs outage per year) averaged over a year from their network core to the home demarcation point	Yes
Confirm the <u>option</u> to remain working during a power outage (eg those with a medical condition or security alarm who may require it) by the addition of a back-up battery source of power with a capacity of 4-8 hours	Yes. Battery back up to be funded and maintained by customer
Confirm appropriate network capacity is available or planned to be available within an acceptable time to service the subdivision	Yes – We have over 30 spaces currently available on the Tahekeroa Base Station site. We will also expand the capacity of the site once the remaining spaces are filled.

Compass Communications LTD – SH16, Tahekeroa Road, Makarau, 0873

Pricing

Service		Pricing (\$, incl GST)
Compass Wireless	Installation	\$249 for standard install
Homephone + Internet	Monthly Rental (Up to 5/1Mbps Broadband Access+ 25GB + Home phone)	From \$88
Compass Wireless	Installation	\$249 for standard install
Internet	Monthly Rental (Up to 5/1Mbps Broadband Access + 25GB)	From \$78

NOTES:

- *Tests performed on bare subdivision with no existing buildings.
- *Line of sight and throughput is acceptable from ground level within the tested lot
- *Compass Communications has no control over future man-made or natural structures that may inhibit the delivery of service to the tested lot.

This report and certification is provided as evidence that the telecommunication requirements set by condition of subdivision have been complied with.

Signed



Print:

Abilash Thangavel

Position

Wireless Sales Representative

Telco

Compass Communications LTD

Date

12/07/2016

Telco Report to Council for Infill Subdivision via Wireless Telecommunications

Subdivision address(s): SH16, Tahekeroa Road, Makarau, 0873

Surveyed/tested lots – Lot 6 (1.5ha)

Telco Reference: Jeremy Dillon (590908) Council Reference:

Line of Sight Test Date: 08/07/2016

Services Expected to be Supplied

Item	Service Detail	Telco to Certify if can supply (Yes/No)
Phone line	Standard exchange based phone services	Yes
	Option for second phone line	Yes
	Supports fax service	Subject to the fax machine
	Supports a monitored security alarm line	Yes for IP Alarms / No for Analogue monitoring
	Supports a medical alarm (such as St John's "Lifelink" service)	Yes for IP alarms / No for Analogue
Internet	Internet access for browsing and email	Yes

Service Parameters

Parameter	Telco to Certify and/or Comment
Confirm good line of sight coverage from the telco radio node/base station to the individual homes in the subdivision *	Due to the natural elevation, size and close proximity to the Tahekeroa Base Station, this lot has passed a line of sight test for a data and VoIP communications service.
Schedule results of any signal strength or file transfer tests carried out	Refer notes below
Are any easements required to protect line of sight transmission? *	No* as below
Confirm satisfactory site tests have been performed to each property/home*	Yes*
State Internet speed achieved at the site test	Up to 10Mbps downlink / 3Mbps uplink
Confirm a design reliability of at least 99.9% (approx 8 hrs outage per year) averaged over a year from their network core to the home demarcation point	Yes
Confirm the <u>option</u> to remain working during a power outage (eg those with a medical condition or security alarm who may require it) by the addition of a back-up battery source of power with a capacity of 4-8 hours	Yes. Battery back up to be funded and maintained by customer
Confirm appropriate network capacity is available or planned to be available within an acceptable time to service the subdivision	Yes – We have over 30 spaces currently available on the Tahekeroa Base Station site. We will also expand the capacity of the site once the remaining spaces are filled.

Compass Communications LTD – SH16, Tahekeroa Road, Makarau, 0873

Pricing

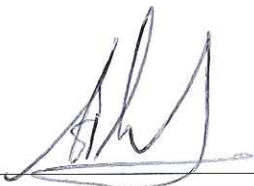
Service		Pricing (\$, incl GST)
Compass Wireless	Installation	\$249 for standard install
Homephone + Internet	Monthly Rental (Up to 5/1Mbps Broadband Access+ 25GB + Home phone)	From \$88
Compass Wireless	Installation	\$249 for standard install
Internet	Monthly Rental (Up to 5/1Mbps Broadband Access + 25GB)	From \$78

NOTES:

- *Tests performed on bare subdivision with no existing buildings.
- *Line of sight and throughput is acceptable from ground level within the tested lot
- *Compass Communications has no control over future man-made or natural structures that may inhibit the delivery of service to the tested lot.

This report and certification is provided as evidence that the telecommunication requirements set by condition of subdivision have been complied with.

Signed



Print:

Abilash Thangavel

Position

Wireless Sales Representative

Telco

Compass Communications LTD

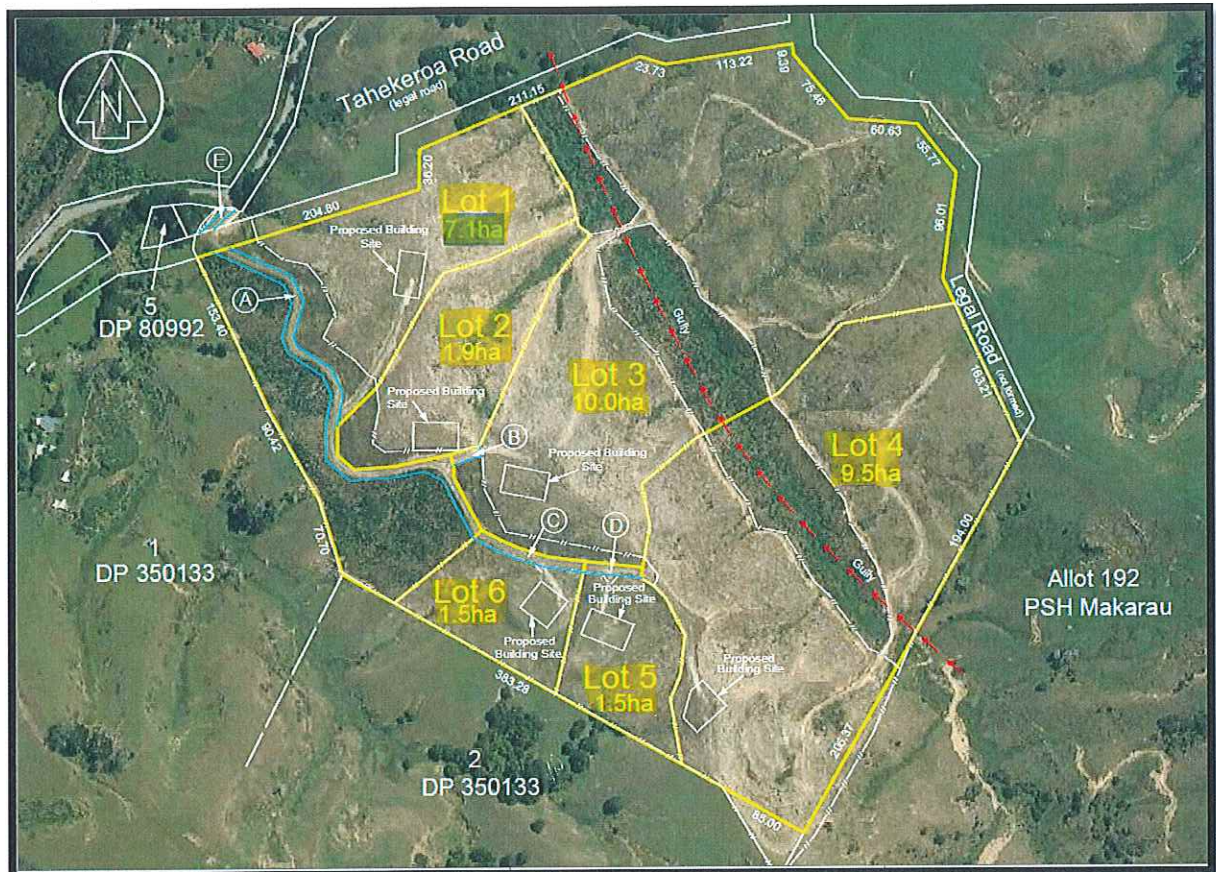
Date

12/07/2016

Appendix

Site Plan

Highlighted Lot 1,2,3,4,5, & 6 are proposed site.



Installer

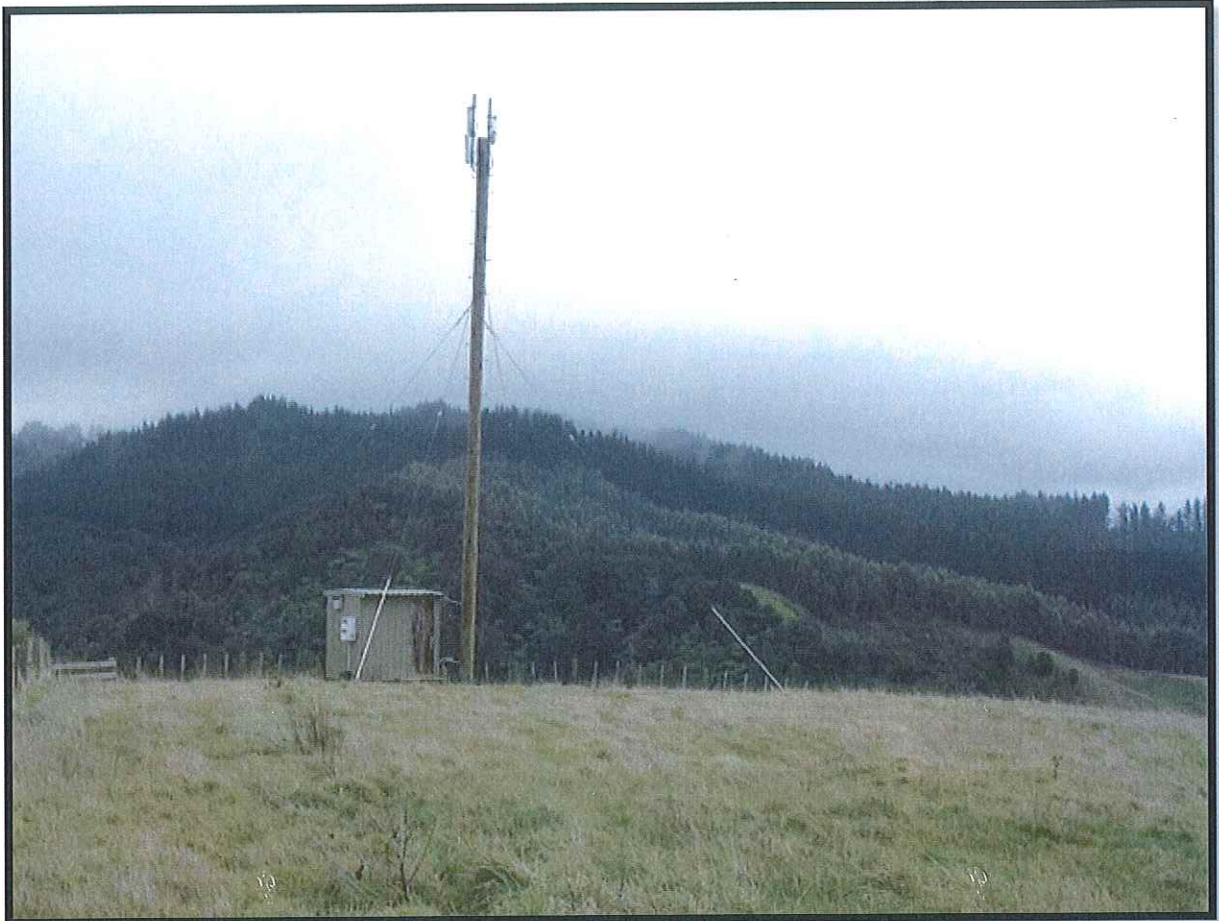
Lot 1

Proposed Lot has Clear Line of site to Tahekaroa Base Station
Compass will be able to support Phone and Data Connection.



Lot 2

Proposed Lot has Clear Line of site to Tahekaroa Base Station
Compass will be able to support Phone and Data Connection.



Lot 3

Proposed Lot has Clear Line of site to Tahekaroa Base Station
Compass will be able to support Phone and Data Connection.



Lot 4

Proposed Lot has Clear Line of site to Tahekaroa Base Station
Compass will be able to support Phone and Data Connection.



Lot 5

Proposed Lot has Clear Line of site to Tahekaroa Base Station
Compass will be able to support Phone and Data Connection.



Lot 6

Proposed Lot has Clear Line of site to Tahekaroa Base Station
Compass will be able to support Phone and Data Connection.



